

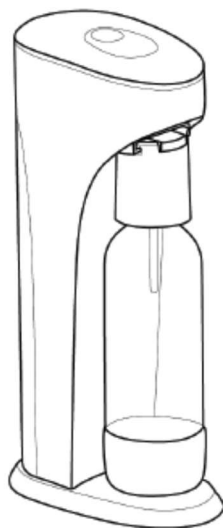
drinkmate™

Home Carbonation System

صانعو الصودا

User Manual

دليل المستخدم



Distributed by / يوزع من قبل

Bubble Bro / بابل برو

www.bubble-bro.com

email: info@bubble-bro.com

Model: Drinkmate 410

Versión: 410-000-3A

IMPORTANT SAFEGUARDS

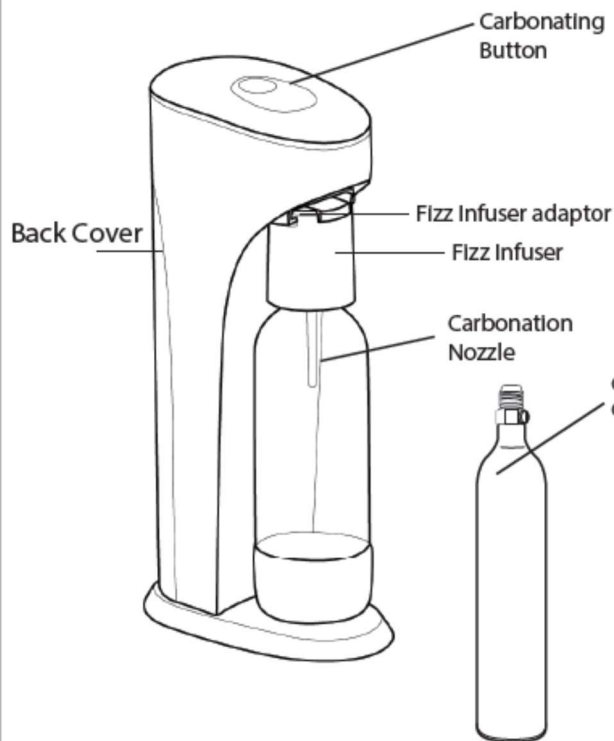
This appliance is intended for home/countertop use only.

1. DO NOT store water bottle, fizz infuser or CO2 carbonator in a freezer
2. DO NOT store water bottle, fizz infuser or CO2 carbonator near or in a stove/oven or other heat source, such as a heated car.
3. If the CO2 carbonator is colder or warmer than roomer temperature, it must be gradually brought up to room temperature before use. DO NOT place it in the freezer or on a heat source to speed up the process.
4. Inspect that the CO2 carbonator and bottle are firmly attached before each use.
5. Check expiration date on bottle. Do not use out of date bottle.
6. Never transport a unit with a full bottle attached.
7. DO NOT make any modifications or repairs to the unit and accessories. Repairs may be made only by our authorized service personnel.
8. Only use approved accessories, such as bottles and CO2 carbonators.
9. **WARNING:** Food Safety Hazard:
 - Always use only food/beverage-grade CO2.
 - Never use a CO2 carbonator originally intended for non-food uses (e.g., paintball, medical grade)
 - Never use any adapter that permits use of non-beverage-grade CO2 or non-beverage CO2 carbonators
10. Be aware of the foaming rate of the beverage you are carbonating. If the beverage starts generating excess foam slow down your carbonation rate and wait for the foam to settle.

11. DO NOT remove fizz Infuser while bottle contents are pressurized.
12. Always place the unit on a level, stable, and water-resistant surface.
13. The unit must always be upright during operation.
14. DO NOT submerge the unit under water and do not clean while in operation.
15. Only use the unit when a filled bottle is inserted. Never attempt to fill an empty bottle with CO2.
16. **WARNING:** Bottle contents are under pressure.
17. Hand wash bottle with soap and warm water. Never place in dishwasher. Never use brushes, abrasives, or chemical cleaners.
18. **WARNING:** Explosion Hazard. Always store CO2 carbonators in a cool, dry place, away from any type of heat exposure. Exposing to heat can cause carbonator pressure to build up and release CO2 gas unexpectedly. Do not touch carbonator if CO2 is being released; wait until all CO2 is discharged and carbonator has come to room temperature.
19. **WARNING:** Burn Hazard. Discharging CO2 gas can cause skin to freeze.
20. The water bottle storage temperature range is MAX: 40°C, MIN: 1°C. Never store outside this range.
21. Use the unit to carbonate pulp free drinks only.

SAVE THESE INSTRUCTIONS!

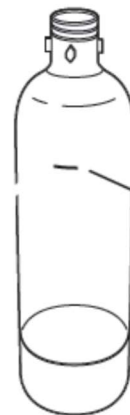
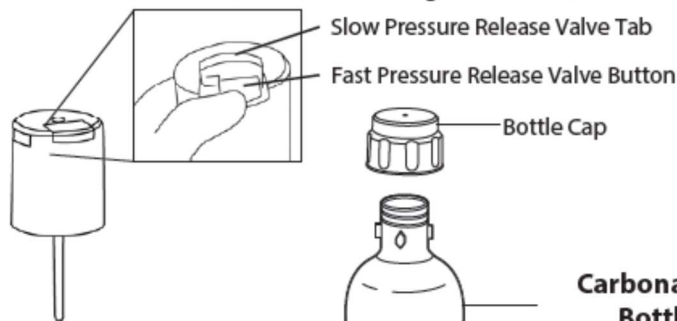
PARTS AND FEATURES



Compatible with 60L (410g) CO2 Cylinder (sold separately)



BEFORE FIRST USE: Hand wash water bottle in warm soapy water; rinse. Wipe outside with a soft cloth to dry. Never wash water bottle in dishwasher. Harsh chemicals will damage water bottle.



Carbonation Bottle

MAX Fill Level

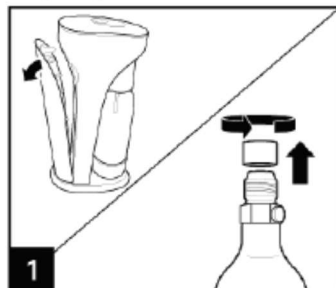
⚠ WARNING

Food Safety Hazard

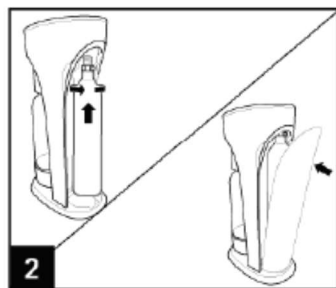
- Only use food/beverage-grade CO2
- Never use any CO2 carbonator originally intended for non-food uses (e.g., paintball)
- Never use an adapter that permits use of non-food / non-beverage-grade CO2 or non-food / non-beverage CO2 carbonator.

HOW TO USE

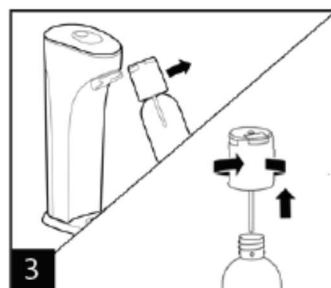
NOTE: Only use approved CO2 carbonator and Drinkmate bottles. Never carbonate if water bottle is empty or not completely attached.



1 Remove back cover and pin protector as indicated on the instruction attached to the pin protector inside the back panel. Remove seal and twist off cap from CO2 carbonator.

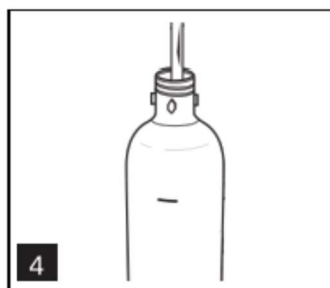


2 To install CO2 carbonator, insert threaded part of carbonator into unit receptacle and hand-tighten. Replace back cover.



3 Remove Fizz Infuser and bottle assembly by pulling assembly forward 45 degrees and then sliding it off the countertop unit.

Remove Fizz Infuser from bottle by rotating it counter-clockwise and then pulling it up.

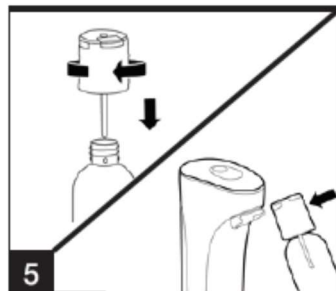


4 Fill carbonation bottle with beverage you intend to carbonate. Do not fill past the maximum fill line.

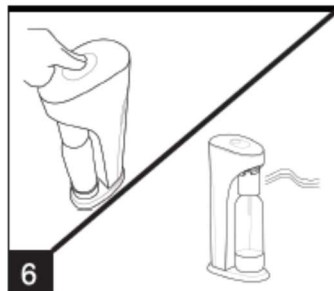
Only use pulpless beverages and pulp free juices.

WARNING: Pulped beverages may clog the pressure release valve.

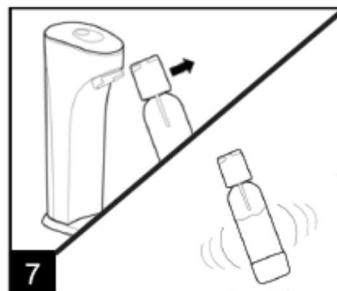
HOW TO USE (Continued)



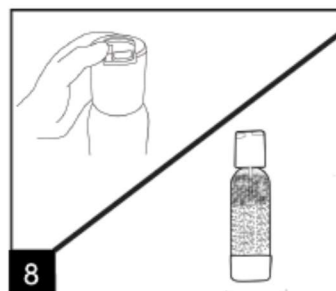
5 Attach Fizz Infuser to the bottle by pushing down while screwing it in clockwise. Slide Fizz Infuser fully into the countertop adapter and tilt Fizz Infuser to straight vertical position.



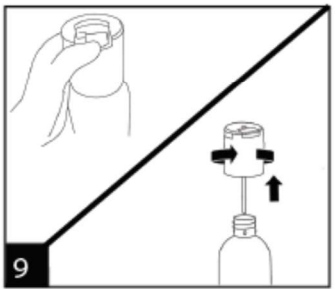
6 •For high foaming beverages, carbonate using short burst of 0.25 seconds allowing the bubbles to settle between presses. For low foaming beverages longer presses can be used. Learn from experience to limit foam from reaching the top of the bottle.
•Stop carbonating when a discharge sound is heard.



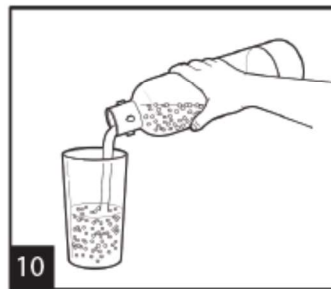
7 Pull Fizz Infuser and Bottle Assembly forward 45 degrees and slide it off of the machine. Gently shake the bottle and Fizz Infuser assembly to increase carbonation level.



8 Open the slow release valve on the fizz infuser and pay attention to foam levels as pressure releases. If the foam reaches the top of the bottle close the slow release valve and wait for foam to settle before opening again. If the foam reaches the top too quickly next time shorten your carbonation pushes.



9 If the slow release valve is open and the sound of air coming out stops, press the blue fast release button to make sure pressure is fully released. Remove Fizz Infuser by unscrewing it counter-clockwise.
WARNING: Do not attempt to remove Fizz Infuser without ensuring that pressure has been fully released.

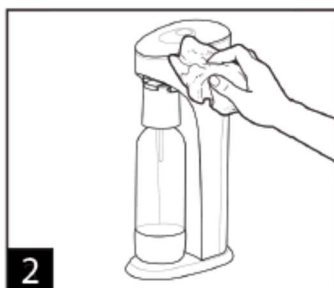


10 Pour yourself a refreshing carbonated beverage. Take care not to pour too quickly, some beverages will still foam significantly more than others. Learn from experience and enjoy your drinks.

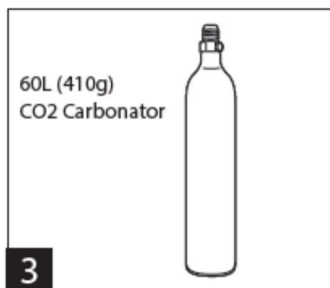
CARE AND CLEANING



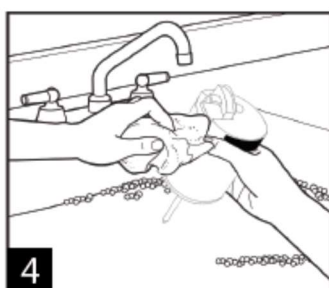
1 Rinse water bottle with clean water after each use.



2 To clean the carbonating unit, wipe with a damp cloth. Do not immerse unit in water. Do not use any solvents or abrasive cleaners, as this could damage the surface.



3 Empty CO₂ carbonators may be exchanged for a full carbonator - visit www.bubble-bro.com for details



4 Make sure to wash Fizz Infuser after every use under running water. The Fizz Infuser allows you to carbonate non-water beverages because it can both slowly relieve pressure and can be easily cleaned. This is especially important if foam came out of the valve during use.

WARNING!!! Damaged water bottles can fail during carbonation. Hand wash with soap and warm water. Never place water bottle in dishwasher. Never use brushes, abrasives, or chemical cleaners. Replace water bottle if it is scratched, deformed, or beyond expiry date.

TIPS FOR BEST RESULTS

- Use the coldest water possible- ideally 0.5°-5.5°C
- Visit www.bubble-bro.com for more tips and recipies.

Troubleshooting

PROBLEM	PROBABLE CAUSE/SOLUTION
No Carbonation	<ul style="list-style-type: none">• Check if CO2 carbonator is empty - If you do not see CO2 being pumped into the bottle / beverage you are infusing, exchange the empty CO2 carbonator with a new / full one.• Carbonator is too cold. Wait until carbonator reaches room temperature.• Water is too warm. Use very cold water / beverages - Ideally 0.5°-5.5°C.• Check to see if CO2 carbonator is properly installed into the receptacle.
Slight Carbonation	<ul style="list-style-type: none">• CO2 is not mixed well with water. Allow for 10 seconds after CO2 is released into water/beverage to complete mixing before releasing pressure.• CO2 carbonator is empty. Exchange the empty CO2 carbonator with a new / full one.• Carbonator may be too cold. Wait until carbonator reaches room temperature.• Water may be too warm. Use very cold water - Ideally 0.5°-5.5°C.• Press on the carbonation button for a longer period of time.
It is difficult to remove the water bottle from the carbonating unit after carbonating	<ul style="list-style-type: none">• The excess CO2 may not have been fully released. Lift the pressure release tab on the Fizz Infuser and wait until all the excess CO2 has been released.
Foam rises too quickly while carbonating or releasing pressure	<ul style="list-style-type: none">• Use shorter carbonation bursts. Every liquid beverage will foam differently. If foam is coming out of the release valve when you are releasing pressure through it, next time you carbonate that beverage use shorter bursts and wait longer between each carbonation press. This is a machine that allows you to design your own beverages and learn to make beverages to your liking. The more you make drinks the more aware you will be as to how to carbonate your favorite drinks.